

#safespace

SAFETY@KLAY



www.klayschools.com | info@klayschools.com

WE ARE GETTING OUR CENTRES READY TO WELCOME OUR LITTLE ONES

AND WHEN IT COMES TO THEIR SAFETY,
WE PROMISE TO LEAVE NO STONE UNTURNED.

Dear Parents,

The safety and health of our children **is and shall always be of paramount importance to us**. While we are all geared up and excited to welcome our children back to the centres, we would like to let you know of some of the precautionary measures, adapted from the CDC safety guidelines that we will be taking to create a **safe, healthy and happy environment** for our little ones as well as our staff. We will keep sharing more details with you at regular intervals.



CENTRE AND STAFF HYGIENE

BEFORE CENTRE OPENING

- ▲ **COVID Fumigation** (Bayer's Viroff 753 disinfectant spray)
- ▲ **Deep cleaning and sanitization** of the centre as well as of all movable and immovable assets and toys.
- ▲ **Staff** will start recording their **temperature 7 days before the centre opening** and update the same on the KLAY Kommunity app. Parents will be able to view the same.
- ▲ **Parents** will start recording their's and their **child's temperature 7 days before centre opening** and update the same on the KLAY Kommunity app.



CENTRE AND STAFF HYGIENE

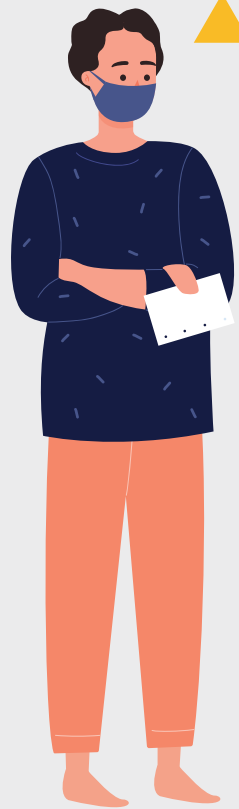
AFTER CENTRE REOPENING

- ▲ **Daily cleaning, mopping & sanitization** of frequently accessed sections (door knobs, picket fences, etc)
- ▲ **Cleaning** of washrooms and mopping of common areas **every 2 hours**.
- ▲ **Sanitization of Infant toys every 3 hours**.
- ▲ All **cutlery and utensils** washed with **hot water** after use.



CENTRE ACCESS POLICY

- ▲ All employees and visitors will fill up the **self declaration form**.
- ▲ All employees and visitors will comply with **temperature checks and hand sanitization**.
- ▲ **'Arogya Setu'** app shall be used for tracking.
- ▲ All adults shall observe **social distancing**.



CENTRE ACCESS POLICY

- ▲ **No** visitor, staff member, parent or child coming from a '**Red Zone**' will be given any **access**.
- ▲ **Limited access** to nursing mothers. Access to other KLAY employees will be at the discretion of the Centre Director.
- ▲ No access to parents beyond reception or pick up point.
- ▲ No access to vendors during operational hours.
- ▲ All visitors shall wear **masks mandatorily**.
- ▲ Centre walkthroughs for new admissions will be in pre-defined areas only and **parents will not be allowed into the classrooms**.



CHILD'S ARRIVAL PROCESS AT THE CENTRE



Child will enter the centre with a mask worn from home.



The child will remove his/her shoes.



The child will sanitize his/her hands at the 'NO TOUCH' sanitization stand.



The child will remove his/her mask, put it in a pouch and hand it over to the parent.



Temperature check of the child.



The child will enter the center and go for handwash

CHILD'S HEALTH & SAFETY

Temperature checks upon arrival at the centre. In case of symptoms of fever, cold or flu, the child will be kept at home for 14 days.



CHILD'S HEALTH & SAFETY

- ▲ Hand sanitization with child friendly products, followed by hand-wash upon entering the centre.
- ▲ Hourly hand wash breaks.



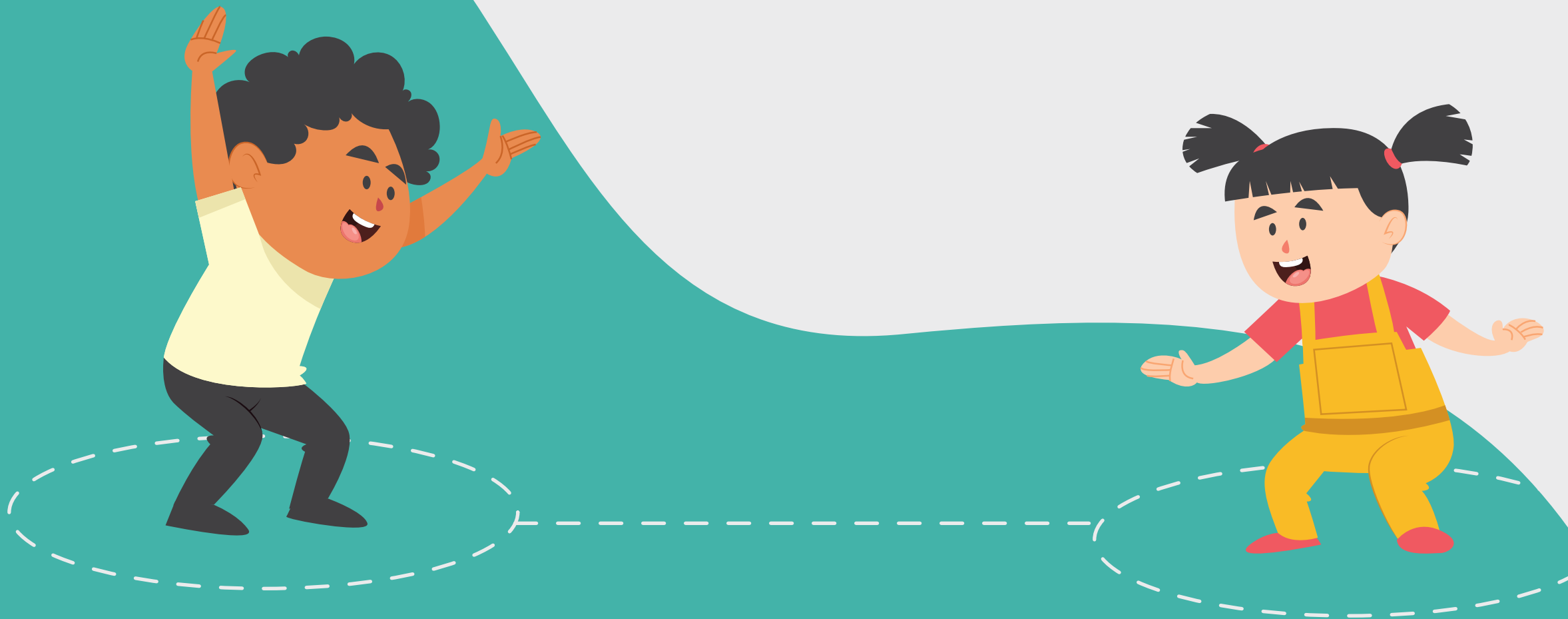
CHILD'S HEALTH & SAFETY

Child to wear a mask from home location till the centre pick up point.



CHILD'S HEALTH & SAFETY

Social distancing and COVID awareness using child appropriate pedagogy.



CHILD'S HEALTH & SAFETY

Centre staff will sanitize and wash hands on an hourly basis.



CHILD'S HEALTH & SAFETY

All support staff will wear freshly washed aprons and teachers will wear clean waistcoats at all times.



CHILD'S HEALTH & SAFETY

Kitchen, housekeeping and security staff will wear caps, masks and gloves at all times.



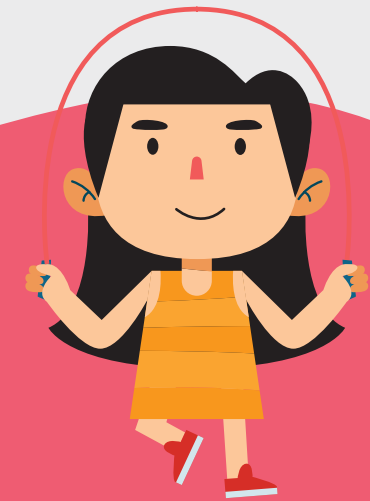
CHILD'S HEALTH & SAFETY

Parents will update their's and their child's temperature, at 7pm, every evening for a month, and record the same on the KLAY Kommunity app.



SOCIAL DISTANCING

While we know that it is difficult to get our children to sit in one place and maintain a distance from their friends, it is our endeavour to implement an adequate distance among the children, while at the centre.



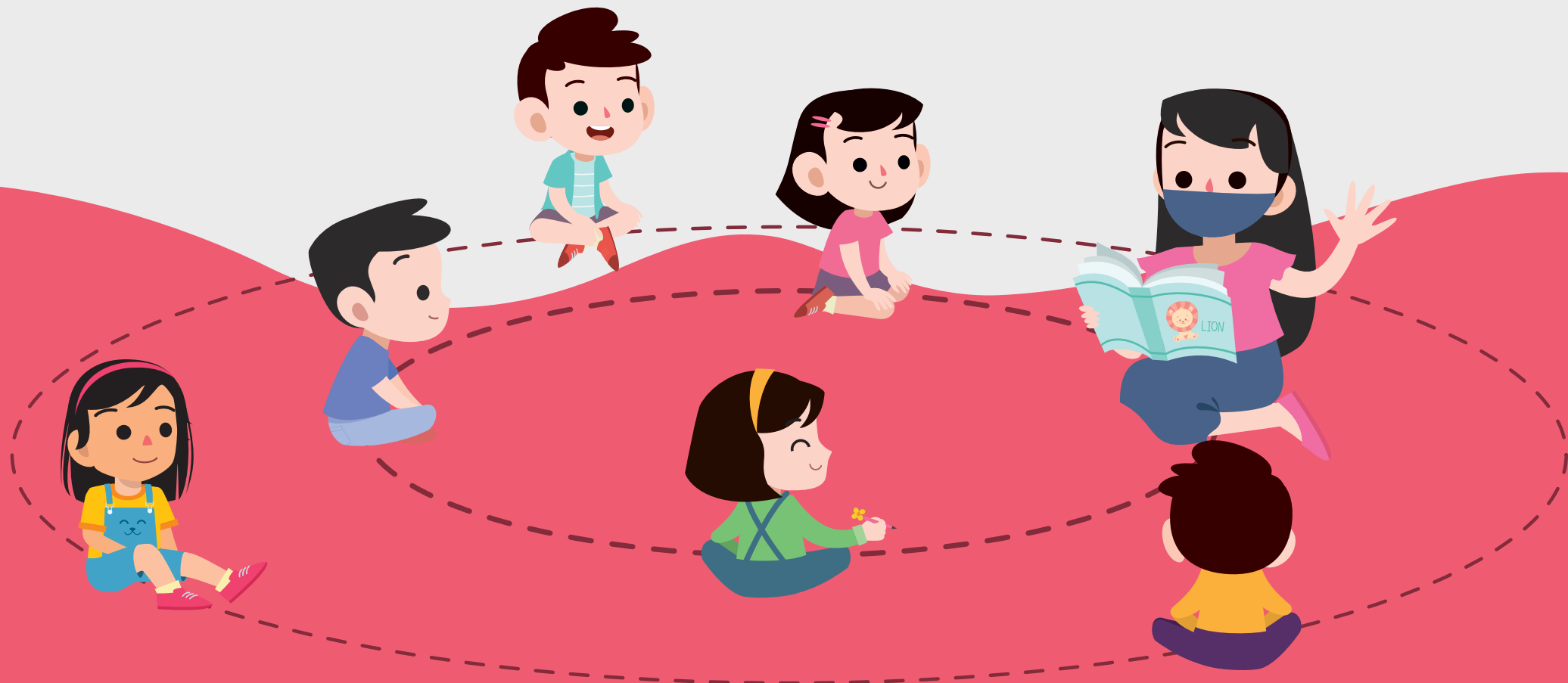
SOCIAL DISTANCING

A queue management system will be followed with demarcated pick up and drop off areas. (Please reach the centre 5-10 minutes before your usual time.)



SOCIAL DISTANCING

Demarcated class rooms will be implemented with inner & outer circles by using chairs or placement mats.



SOCIAL DISTANCING

- ▲ Staggered classes depending on the overall attendance.
- ▲ Realignment of furniture wherever possible.
Or else the child will be seated leaving one chair empty on either side.



SOCIAL DISTANCING

Staggered pick up & drop offs.



SOCIAL DISTANCING

Staggered meal times.



FOOD POLICY

- ▲ Parents should send water and home cooked food for the first 4 weeks.
- ▲ Parents should send finger food, roti/dosa, etc that has been cut into pieces. We will encourage the child to eat with a spoon and avoid feeding by bare hands.
- ▲ The child's water bottle, lunch box and bag should be labelled clearly to prevent swapping of the same.



TRANSPORT POLICY

Keeping in mind the safety of our children, transport facility will be unavailable until further notice.



ENSURING THE SAFETY OF OUR CHILD IS NO CHILD'S PLAY

AND WE WILL NEED YOU TO PARTNER WITH US SO THAT WE CAN TRULY
CREATE A HAPPY AND SAFE SPACE FOR OUR CHILD.



It has been a tough couple of months and our little ones must be really missing their friends and teachers. Let us bring back into their life the joy of learning with their friends. Let us all together make this a smooth, happy and safe transition for them.